

TOOLS REQUIRED:

- 2.5mm non-ball ended Allen wrench
- 4mm non-ball ended Allen wrench
- 8mm open ended wrench.



IMPORTANT:

PLEASE COMPLETELY UNDERSTAND ALL USER INSTRUCTIONS AND SAFETY INFORMATION BEFORE USING THIS PRODUCT. AS WITH ANY HIGH TECH PRODUCT YOU WILL NEED TO ROUTINELY CHECK FOR LOOSE HARDWARE, CRACKS OR OTHER DAMAGE AND REPLACE ITEMS AS NECESSARY. DO NOT USE PRODUCT IF ANY OF THESE CONDITIONS EXIST.

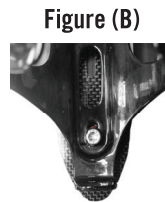
STEP 1 MINI MOUNT AND CAGE ATTACHMENT

1. **REMOVING BOTTLE.** Hold Mount and twist bottle clockwise, lift nose and pull bottle forward and out of the cage. **Figure (A)**



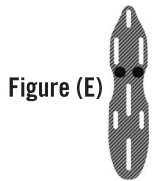
2. **REMOVING CARDBOARD PLATFORM.** Using 4mm Allen wrench and 8mm open ended wrench loosen the two screws. Tear off the cardboard.

3. **POSITIONING CAGE AND MINI MOUNT.** Ensure the rear screw is as at the rear of the cage and in the rear of the slot in the Mount **Figure (B)**. Ensure the Aero Spacers have the tails pointing to the rear of the Mount. **Figure (C)**
Tighten the screws.

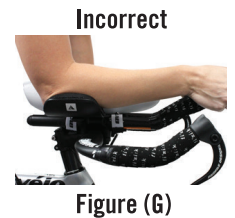
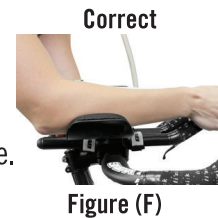


4. **INSERT 4 STRAPS ONTO MOUNT.** Install per **Figure (D)** with buckles beneath the mount.

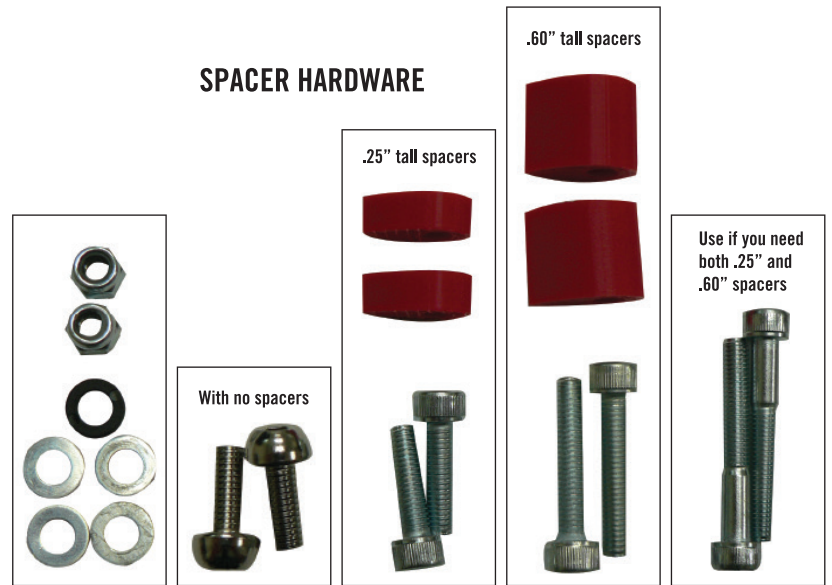
5. **ATTACHING MOUNT.** Lay the Mount onto the aerobars. Position the rear straps as far back on the bars as possible. If any parts of the mount or screws touch the stem, then add the Velcro Pads to the mount. **Figure (E)**
Thread straps through buckles and tighten.



6. **CHECKING CAGE HEIGHT.** Standing opposite a mirror put your arms in the aerobars. If the bottle shows more above your arm then use the smaller spacers. If the bottle shows more below your arm then use the larger spacers. It may be that no spacers are used in order to get the proper height. Tighten screws to 30 in lbs. of torque. **Figure (F) & Figure (G)**

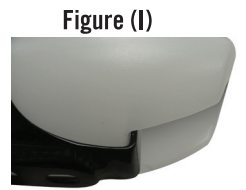


7. **FINAL STRAP TIGHTENING.** The non-slip silicone on the straps should be touching the aerobars. Center the Mount and tighten opposite straps. Then go back and re-tighten all straps to ensure all straps have good tension. Make sure that the reinforced (double thickness) section of the nylon strap is in the slot on the **TORPEDO MINI MOUNT**. **Figure (H)**



STEP 2 BOTTLE INSTALL

1. **EASY INSTALL.** Tilt the bottle clockwise approximately 1/2 inch. Push rearwards, ensuring the rear tab of the cage slides into the rear bottle recess. Next ensure the rear cage screw head clicks into the long recess on the bottom of the bottle. The cage tab should now sit against the vertical surface inside the back of the bottle. **Figure (I)**



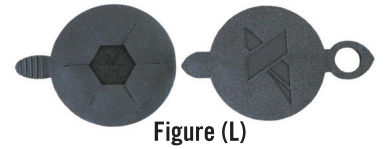
2. **DOLPHIN TAIL INSTALL.** Decide if you want to fold your straw or keep it upright. If you decide to keep it upright, set the **DOLPHIN TAIL** straw retainer and screw aside. In order to fold your straw you will need to use the **DOLPHIN TAIL** straw retainer. Using a 2.5 mm Allen wrench and the supplied M4 screw, attach the Tail into the top of the bottle. Torque to 10 in. lbs maximum. **Figure (J)**



3. **STRAW INSTALL.** Determine which hole is best suited for you. Push the supplied plug firmly into the other hole. For the straw to be vertical, tuck the end of the straw behind the groove in the bottom of the bottle. **Figure (K)** If you intend to fold the straw down then place the bottom of the straw in front of the bottle groove. After each ride, gradually trim the straw to your optimum length.

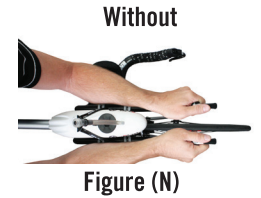


4. **LID INSTALL.** The split lid provides the fastest refilling but there may be some splashing over bumps. The solid lid will be much dryer but there is a very small breather hole that may emit very small amounts of liquid at times. Choose whichever you prefer. The solid lid has a tether hole. Put the straw through this hole to avoid losing the lid when refilling. **Figure (L)**



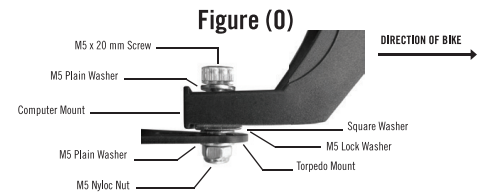
STEP 3 COMPUTER INSTALL

The **TORPEDO SYSTEM** is designed to be used with or without a computer in front of the bottle for optimal visibility and functionality. **Figure (M) & Figure (N)**



1. Mount the XLAB **AERO COMPUTER MOUNT** (included) on the nose of the **TORPEDO MINI MOUNT** with the supplied hardware.

2. Place the 20mm long M5 bolt through one M5 plain washer, through the **AERO COMPUTER MOUNT**, through the M5 square washer, through the M5 lock washer, through the **TORPEDO MOUNT**, through the second M5 plain washer and into the M5 Nyloc nut. **Figure (O)**



3. The front edge of the computer should sit slightly behind the rider's wrist. Slide the mount along the slot on the **TORPEDO MOUNT** to accomplish this placement and tighten completely to 30 in. lbs of torque.

STEP 4 BOTTLE CARE

WASH YOUR TORPEDO BOTTLE, HOSE, PLUG, BITE VALVE AND LID EVERY TIME YOU USE IT AND BEFORE INITIAL FIRST USE.

Your **TORPEDO BOTTLE** is dishwasher safe.

Dishwasher

1. Remove all accessories from the bottle before washing (straw, plug and lids) The **DOLPHIN TAIL** can remain attached.
2. Wash in top rack only.

Hand Wash

1. Not necessary to remove accessories when cleaning by hand.
2. Fill bottle with soapy water.
3. Use one hand to cover the holes on top of the bottle.
4. Shake bottle vigorously.
5. Rinse and repeat.

WARRANTY

VEE CAGE- Limited 1 year
TORPEDO CARBON CAGE – Limited Lifetime
MINI MOUNT CARBON – Limited Lifetime
MINI MOUNT ALUM – Limited 1 year
TORPEDO BOTTLE – Limited 1 Year
All Other Parts – Limited 6 months